

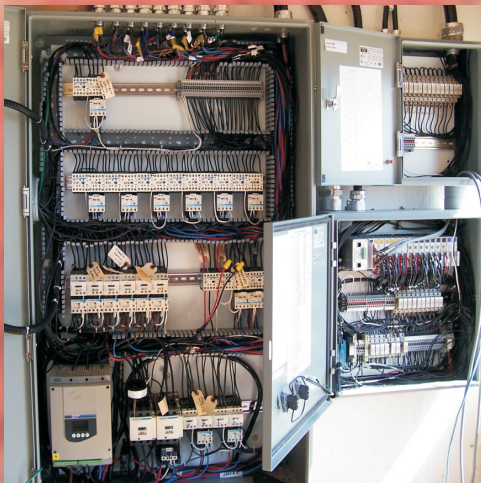


seed plant controls



fully
automated
solutions

manual
control
packages



custom
contactor
panels

Benefits of Automation

Expand your production by implementing one of our monitoring systems to run 24/7 without supervision. Let our system make you money while you sleep!

Reduce spills -- our controls will stop your plant as soon as a malfunction is detected, reducing plugging and overflow within your plant.

Cut back downtime -- we can remotely connect into your system to diagnose and correct control problems (internet connection required). No more waiting for a technician to make a service call.

Ease of Use -- our touchscreen computer driven solutions will simplify running your plant. We'll take care of properly starting, stopping, and monitoring your plant through an easy-to-use graphic interface. One glance at the screen and you will know what's happening in your plant.

Free up your time -- the system can automatically switch gates or valves when bins fill, meaning you don't have to stay around the plant to keep an eye on bin levels.

Watch from a distance through our remote monitoring solutions. You can keep an eye on your plant from home -- no more checking on the plant all hours of the night!



One-Step Automation
Box 1197
Niverville, MB
R0A 1E0 CANADA

Ph. (204) 388-4101
Email: sales@one-step.ca
Website: www.one-step.ca